

SmartBank

Internet Bank Statement History Download Guide

NEDBANK – Personal - Banking



Select “Enquiries” and then “Statements”

The screenshot shows the NEDBANK website interface. At the top left is the NEDBANK logo. To the right are buttons for 'CONTACT US', 'HELP', and 'LOG OFF'. Below the logo is a navigation bar with 'enquiries', 'Payments', 'Beneficiaries', and 'Admin'. Under 'enquiries', there is a sub-menu with 'All Balances', 'Balances', 'Statements', and 'Forex Rates'. The 'Statements' option is highlighted with a red border. A callout box with a red border and a white background points to the 'Statements' option, containing the text 'Select Enquiries, Statements.' Below the navigation bar is a table with columns: 'No', 'Account number', 'Account type', 'Current balance', and 'Available balance'. The first row of the table shows '1', 'SAVINGS', 'Savings', and empty cells for 'Current balance' and 'Available balance'. Below the table is a 'Print' button. At the bottom of the page, there is a footer with 'Terms and conditions', 'Copyright © Nedbank Limited 1997 - 2005', 'All rights reserved', 'SA Time: 19:32:29', 'Date: 24/10/2008', and 'Profile name:'. At the very bottom, there is a note: 'This site is best viewed with Microsoft Internet Explorer 6 in 1024X768 screen resolution'.

Select Enquiries, Statements.

No	Account number	Account type	Current balance	Available balance
1	SAVINGS	Savings		

Terms and conditions
Copyright © Nedbank Limited 1997 - 2005
All rights reserved

SA Time: 19:32:29
Date: 24/10/2008
Profile name:

This site is best viewed with Microsoft Internet Explorer 6 in 1024X768 screen resolution

“Browse Statements” by “Date” or “Number”

NEDBANK CONTACT US HELP LOG OFF

Inquiries Payments Beneficiaries Admin

Statement

Select a different account here:

Available payment limit: Available transfer limit:
Current balance: Available balance:

Browse Statements: Previous

Select Date: October 2008

Select Statement Number:

Account description: SAVINGS Statement 286

* Click on an underlined item to view its associated images

Date	Transactions	Debit	Credit	Balance forward
1 Oct 200	BROUGHT FORWARD BALANCE			

Use the scroll bar to scroll to the bottom of the page

DATE	DESCRIPTION	DEBIT	CREDIT	BALANCE
08 Oct 2008	ATM WITHDRAWAL FEE	-4.75		34,699.14
10 Oct 2008	SASW CASH 4325570012555589	-500.00		34,199.14
10 Oct 2008	ATM WITHDRAWAL FEE	-4.75		34,194.39
10 Oct 2008	SASWITCH FEE	-5.00		34,189.39
11 Oct 2008	SASW CASH 4325570012555589	-500.00		33,689.39
11 Oct 2008	ATM WITHDRAWAL FEE	-4.75		33,684.64
11 Oct 2008	SASWITCH FEE	-5.00		33,679.64
14 Oct 2008	SASW CASH 4325570012555589	-500.00		33,179.64
14 Oct 2008	ATM WITHDRAWAL FEE	-4.75		33,174.89
14 Oct 2008	SASWITCH FEE	-5.00		33,169.89
14 Oct 2008	Credit car4901155083414019	-1,580.00		31,589.89
	CARRIED FORWARD BALANCE			31,589.89

Print

Use the scroll bar to scroll to the bottom of the page.


[Terms and conditions](#)
Copyright © Nedbank Limited 1997 - 2005
All rights reserved

SA Time: 19:35:29
Date: 24/10/2008

Profile name:

Open the “Select to export” to drop down menu

3 Oct 2008	ATM WITHDRAWAL FEE	-4.75	34,699.14
10 Oct 2008	SASW CASH 4325570012555589	-500.00	34,199.14
10 Oct 2008	ATM WITHDRAWAL FEE	-4.75	34,194.39
10 Oct 2008	SASWITCH FEE	-5.00	34,189.39
11 Oct 2008	SASW CASH 4325570012555589	-500.00	33,689.39
11 Oct 2008	ATM WITHDRAWAL FEE	-4.75	33,684.64
11 Oct 2008	SASWITCH FEE	-5.00	33,679.64
14 Oct 2008	SASW CASH 4325570012555589	-500.00	33,179.64
14 Oct 2008	ATM WITHDRAWAL FEE	-4.75	33,174.89
14 Oct 2008	SASWITCH FEE	-5.00	33,169.89
14 Oct 2008	Credit car4901155063414019	-1,580.00	31,589.89
	CARRIED FORWARD BALANCE		31,589.89

rint 

Open the **Select to export** to drop down menu.

Terms and conditions
Copyright © Nedbank Limited 15
All rights reserved

SA Time: 19:35:31
Date: 24/10/2008

Profile name:

Select the OFC - Download for MS-Money (or OFX/CSV if required)

3 Oct 2008	ATM WITHDRAWAL FEE	-4.75	34,699.14
10 Oct 2008	SASW CASH 4325570012555589	-500.00	34,199.14
10 Oct 2008	ATM WITHDRAWAL FEE	-4.75	34,194.39
10 Oct 2008	SASWITCH FEE	-5.00	34,189.39
11 Oct 2008	SASW CASH 4325570012555589	-500.00	33,689.39
11 Oct 2008	ATM WITHDRAWAL FEE	-4.75	33,684.64
11 Oct 2008	SASWITCH FEE	-5.00	33,679.64
14 Oct 2008	SASW CASH 4325570012555589	-500.00	33,179.64
14 Oct 2008	ATM WITHDRAWAL FEE	-4.75	33,174.89
14 Oct 2008	SASWITCH FEE	-5.00	33,169.89
14 Oct 2008	Credit car4901155063414019	-1,580.00	31,589.89
	CARRIED FORWARD BALANCE		31,589.89

rint Select to export

- Select to export
- CSV-Download for Text/Excel
- OFC-Download for MS-Money**
- QIF-Download for Quicken
- QIF-Download
- OFX-Download

Select the **OFC-Download for MS-Money** or the **OFX-Download** format.

SA Time: 19:35:32 Profile name:
Date: 24/10/2008


Internet Explorer 6 in 1024X768 screen resolution


Click on "Save"

8 Oct 2008	CARD TRANSACTION FEE	-2.00	35,203.89
8 Oct 2008	ATM CASH 4325570012555589	-500.00	34,703.89
8 Oct 2008	ATM WITHDRAWAL FEE	-4.75	34,699.14
10 Oct 2008	SASW CASH 4325570012555589	500.00	34,199.14
10 Oct 2008	ATM WITHDRAWAL FEE		34,194.39
10 Oct 2008	SASWITCH FEE		34,189.39
11 Oct 2008	SASW CASH 4325570012555589		33,689.39
11 Oct 2008	ATM WITHDRAWAL FEE		33,684.64
11 Oct 2008	SASWITCH FEE		33,679.64
14 Oct 2008	SASW CASH 4325570012555589		33,179.64
14 Oct 2008	ATM WITHDRAWAL FEE		33,174.89
14 Oct 2008	SASWITCH FEE		33,169.89
14 Oct 2008	Credit car4901155063414019		31,589.89
	CARRIED FORWARD BALANCE		31,589.89

File Download

Do you want to open or save this file?

 Name: Statement284.ofc
Type: Unknown File Type
From: netbank.nedsecure.co.za

 While files from the Internet can be used to harm your computer. If you do not trust the source, do not save this file. [What's the risk?](#)

Click on **Save**.

Print OFC-Download for MS-Money

Terms and conditions
Copyright © Nedbank Limited 1997 - 2005
All rights reserved

SA Time: 19:50:39
Date: 24/10/2008
Profile name:

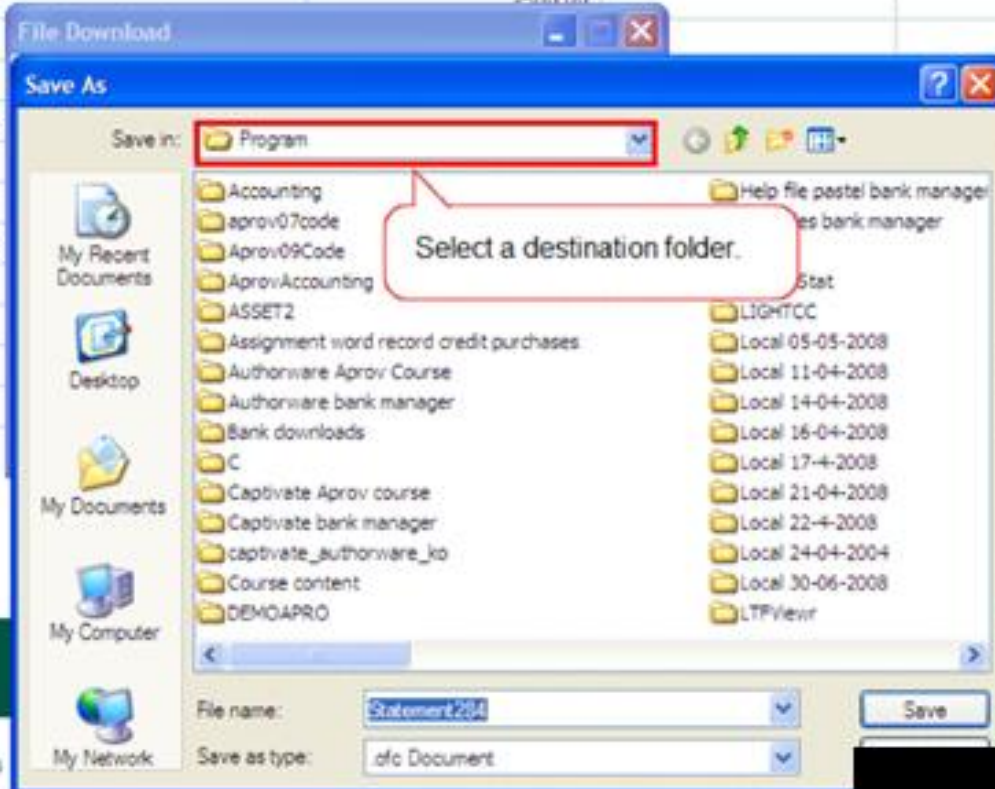
To save file, select a destination folder

8 Oct 2008	CARD TRANSACTION FEE	-2.00	35,203.89
8 Oct 2008	ATM CASH 4325570012555589	-500.00	34,703.89
8 Oct 2008	ATM WITHDRAWAL FEE	-4.75	34,699.14
10 Oct 2008	SASW CASH 4325570012555589	-500.00	34,199.14
10 Oct 2008	ATM WITHDRAWAL FEE		34,194.39
10 Oct 2008	SASWITCH FEE		34,189.39
11 Oct 2008	SASW CASH 4325570012555589		33,689.39
11 Oct 2008	ATM WITHDRAWAL FEE		33,684.64
11 Oct 2008	SASWITCH FEE		33,679.64
14 Oct 2008	SASW CASH 4325570012555589		33,179.64
14 Oct 2008	ATM WITHDRAWAL FEE		33,174.89
14 Oct 2008	SASWITCH FEE		33,169.89
14 Oct 2008	Credit car4901155063414019		31,589.89
	CARRIED FORWARD BALANCE		31,589.89

Print OFC-Download for MS-Money

Terms and conditions
Copyright © Nedbank Limited 1997 - 2005
All rights reserved

This site is



The File name will default to the statement number.
Note that the File must be saved as a .OFC document

8 Oct 2008	CARD TRANSACTION FEE	-2.00	35,203.
8 Oct 2008	ATM CASH 4325570012555589	-500.00	34,703.
8 Oct 2008	ATM WITHDRAWAL FEE	-4.75	34,699.
10 Oct 2008	SASW CASH 4325570012555589	-500.00	34,199.
10 Oct 2008	ATM WITHDRAWAL FEE		34,194.
10 Oct 2008	SASWITCH FEE		34,189.
11 Oct 2008	SASW CASH 4325570012555589		33,689.
11 Oct 2008	ATM WITHDRAWAL FEE		33,684.
11 Oct 2008	SASWITCH FEE		33,679.
14 Oct 2008	SASW CASH 4325570012555589		33,179.
14 Oct 2008	ATM WITHDRAWAL FEE		33,174.
14 Oct 2008	SASWITCH FEE		33,169.
14 Oct 2008	Credit car4901155063414019		31,589.
	CARRIED FORWARD BALANCE		31,589.

Print OFC-Download for MS-Money

Terms and conditions
Copyright © Nedbank Limited 1997 - 2005
All rights reserved

This site is

File Download

Save As

Save in: Program

My Recent Documents

Desktop

My Documents

My Computer

My Network

Accounting

aprov07code

Aprov09Code

AprovAccounting

ASSET2

Assignment word record credit purchases

Authorware Apro Course

Authorware bank manager

Bank downloads

Help file pastel bank manager

Help files bank manager

Iburst

IsBankStat

LIGHTCC

Local 05-05-2008

Local 11-04-2008

Local 14-04-2008

Local 16-04-2008

Local 17-4-2008

Local 21-04-2008

Local 22-4-2008

Local 24-04-2004

Local 30-06-2008

LTPView

File name: Statement284

Save as type: ofc Document

Save

The **File name** will default to the statement number.
Please note: The Save as type must display .ofc document.

Click on “Save”

8 Oct 2008	CARD TRANSACTION FEE	-2.00	35,203.89
8 Oct 2008	ATM CASH 4325570012555589	-500.00	34,703.89
8 Oct 2008	ATM WITHDRAWAL FEE	-4.75	34,699.14
10 Oct 2008	SASW CASH 4325570012555589	-500.00	34,199.14
10 Oct 2008	ATM WITHDRAWAL FEE		34,194.39
10 Oct 2008	SASWITCH FEE		34,189.39
11 Oct 2008	SASW CASH 4325570012555589		33,689.39
11 Oct 2008	ATM WITHDRAWAL FEE		33,684.64
11 Oct 2008	SASWITCH FEE		33,679.64
14 Oct 2008	SASW CASH 4325570012555589		33,179.64
14 Oct 2008	ATM WITHDRAWAL FEE		33,174.89
14 Oct 2008	SASWITCH FEE		33,169.89
14 Oct 2008	Credit car4901155063414019		31,589.89
	CARRIED FORWARD BALANCE		31,589.89

Print OFC-Download for MS-Money

Terms and conditions
Copyright © Nedbank Limited 1997 - 2005
All rights reserved

File Download

Save As

Save in: Program

- Accounting
- aprov07code
- Aprov09Code
- AprovAccounting
- ASSET2
- Assignment word record credit purchases
- Authorware Aprov Course
- Authorware bank manager
- Bank downloads
- C
- Captivate Aprov course
- Captivate bank manager
- captivate_authorware_ko
- Course content
- DEMOAPRO
- Help file pestel bank manager
- Help files bank manager
- iburst
- IsBankStat
- LIGHTCC
- Local 05-05-2008
- Local 11-04-2008
- Local 14-04-2008
- Local 16-04-2008
- Local 17-4-2008
- Local 21-04-2008
- Local 22-4-2008
- Local 24-04-2004

File name: Statement284

Save


Click on Save.

“Download Complete” box will conform download is complete

8 Oct 2008	CARD TRANSACTION FEE	-2.00	35,203.89
8 Oct 2008	ATM CASH 4325570012555589	-500.00	34,703.89
8 Oct 2008	ATM WITHDRAWAL FEE	-4.75	34,699.14
10 Oct 2008	SASW CASH 4325570012555589	-500.00	34,199.14
10 Oct 2008	ATM WITHDRAWAL FEE		34,194.39
10 Oct 2008	SASWITCH FEE		34,189.39
11 Oct 2008	SASW CASH 4325570012555589		33,689.39
11 Oct 2008	ATM WITHDRAWAL FEE		33,684.64
11 Oct 2008	SASWITCH FEE		33,679.64
14 Oct 2008	SASW CASH 4325570012555589		33,179.64
14 Oct 2008	ATM WITHDRAWAL FEE		33,174.89
14 Oct 2008	SASWITCH FEE		33,169.89
14 Oct 2008	Credit car4901155063414019		31,589.89
	CARRIED FORWARD BALANCE		31,589.89

Print OFC-Download for MS-Money

Download complete

 Download Complete

Saved:
Statement29

Downloaded:
Download to:

Transfer rate: 3.21 KB/Sec

Close this dialog box when download completes

Open Open Folder Close

A confirmation box will appear to confirm that the download is complete.

Then import the Internet Banking file into SmartBank



Let SmartBank walk you through how to select, preview and then import your downloaded bank statement file

